

TOWN OF VESTAL FIRE DISTRICT Engine Replacement Project



July 2021



Project Personnel



- Department Chief – John Paffie
- Projects Coordinator – 1st Ass't. Chief Douglas Rose

Truck Replacement Committee Members

- Past Capt. Jon Weber- Committee Chairman
- Capt. Stephen Langeland
- Capt. Phil Walter
- 2nd Lt. Sacha Sigelman-Schwartz
- Past Ass't. Chief Ron Birdsall
- Capt. Kahl Miller
- 3rd Ass't. Chief Charles Paffie
- Capt. Scott Orcutt
- Keith Purdy – Fire Apparatus Industry Liaison/Past Member



Current Engines



- 1998 American LaFrance/Saulsbury (23 yrs old)
- 2000 GPM Pump w/elevated/walk-thru pump panel
- 1000 Gal. Water Tank
- Class A/B Foam system
- Enclosed Cab, seating for 6
- 1000'+ 5" LDH Supply Hose
- 800' 2-1/2" Hose
- 4 - 200' 1-3/4" Preconnects
- Enclosed ground ladders
- Piped deckgun



Reasons for Replacement

- **Vehicle Age** (1998 – 23 years old) – wear and tear
 - Age Related Deterioration
- **Safety**
 - Update safety systems and technology
 - Out of date/lack of updated safety equipment
- **Chassis and Body Manufacturer are both no longer in business**
 - Parts availability is VERY limited/mostly unavailable
 - Systems are failing due to age, particularly electrical/electronics
- **ISO requirements are met by current size, location, and quantity of pumpers**
- **NFPA & ISO require/recommend replacement at 15-20 years**



Age Related Deterioration



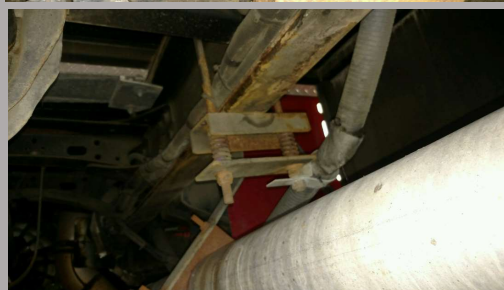
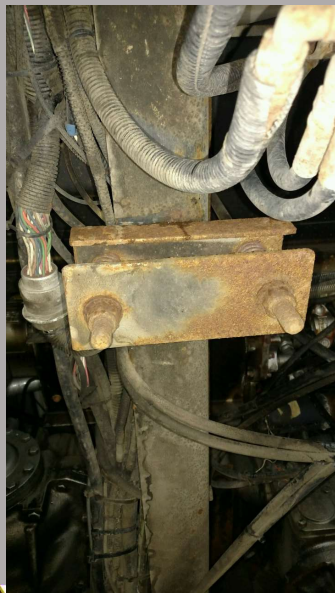
Age Related/Electrical Deterioration



Vestal Fire Department

6

Age Related Deterioration



Electronics Issues



Electronics Issues



Example Engine Replacement



Vestal Fire Department

10

Manufacturer Yet to be Determined (currently out to bid)

Same as Current Engines

- 2000 GPM Pump w/elevated/walk-thru pump panel
- 1000 Gallon Water Tank
- 1000 GPM Piped Deckgun
- A/B Foam System
- Attack and Supply Hose Compliment
- 6 Person Cab
- Enclosed Ladders
- 4 Pre-connect 1-3/4" lines

New Upgrades

- Enhanced Safety Systems
- Upgraded LED lighting
- Front Trash/Hose Line
- Raised Roof in Cab





Trash Line Example

2 Engines currently being built

- 2 Engines – E1 and E4 – currently in production
- Manufacturer - HME Ahrens Fox
- These 2 engines were purchased through the Vehicle Replacement Capital Reserve Fund, saving almost \$500,000 in interest payments over the next 15 years.
- Following 5 pictures are of those engines.





Vestal Fire Department

14

Front Bumper Trash Line Compartment on new engine being built



Photos of new engine being built



Vestal Fire Department

16

Rear view of new engine being built



Pump Panel Area of new engine being built

Replacement Cost – Each Engine

Estimated Price - \$680,000

Change Control Provision (10%) - \$ 70,000

Change control includes equipment needed & bonding

Cost per Engine - \$750,000

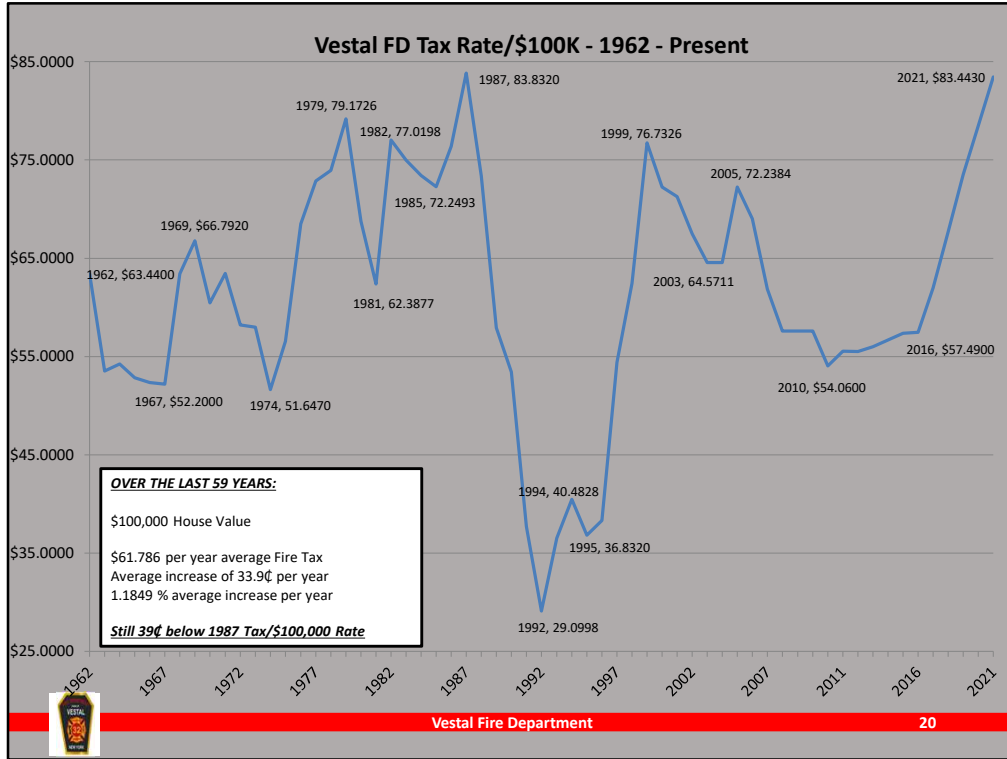
x2

TOTAL Project Cost = \$1,500,000

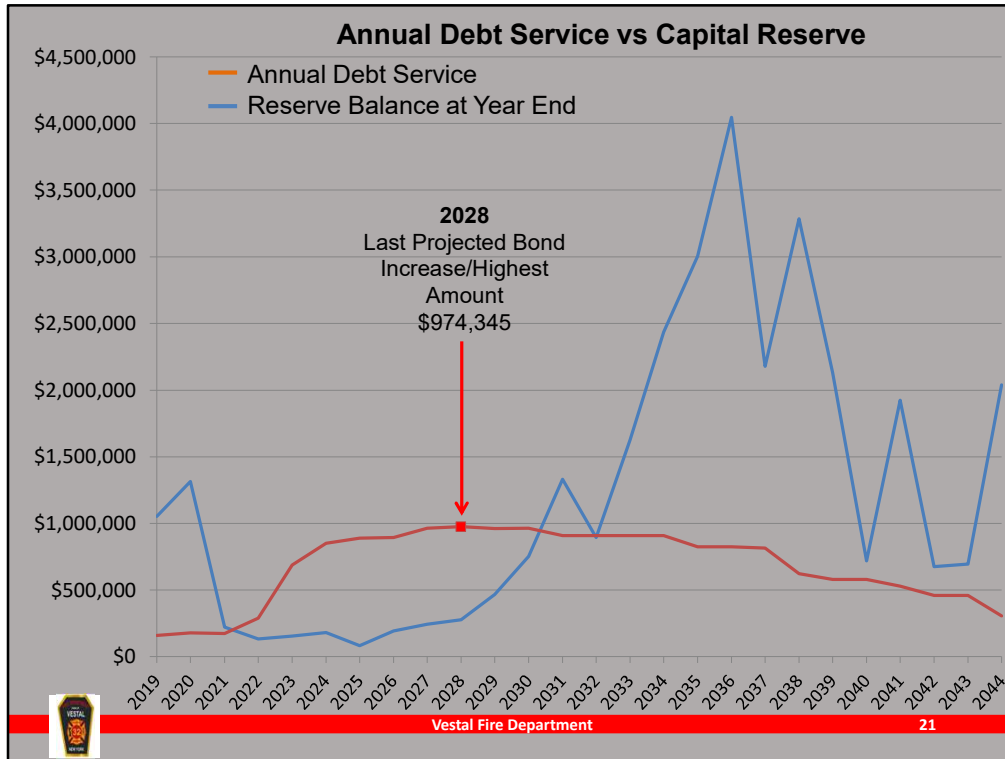


Town of Vestal FD Tax History

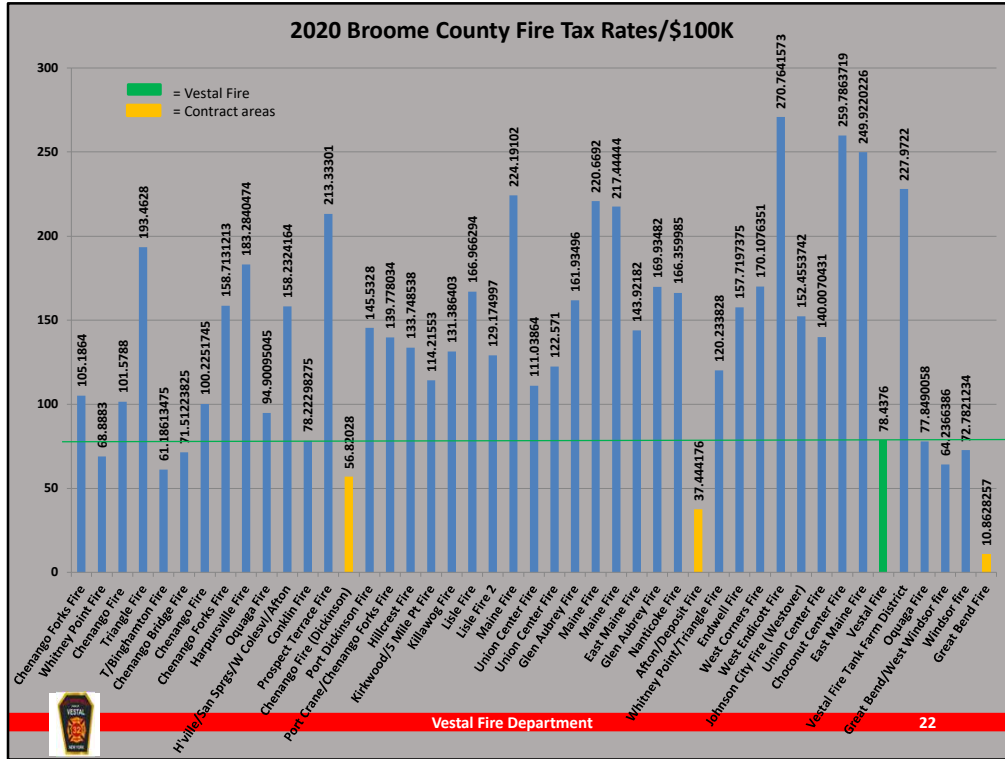




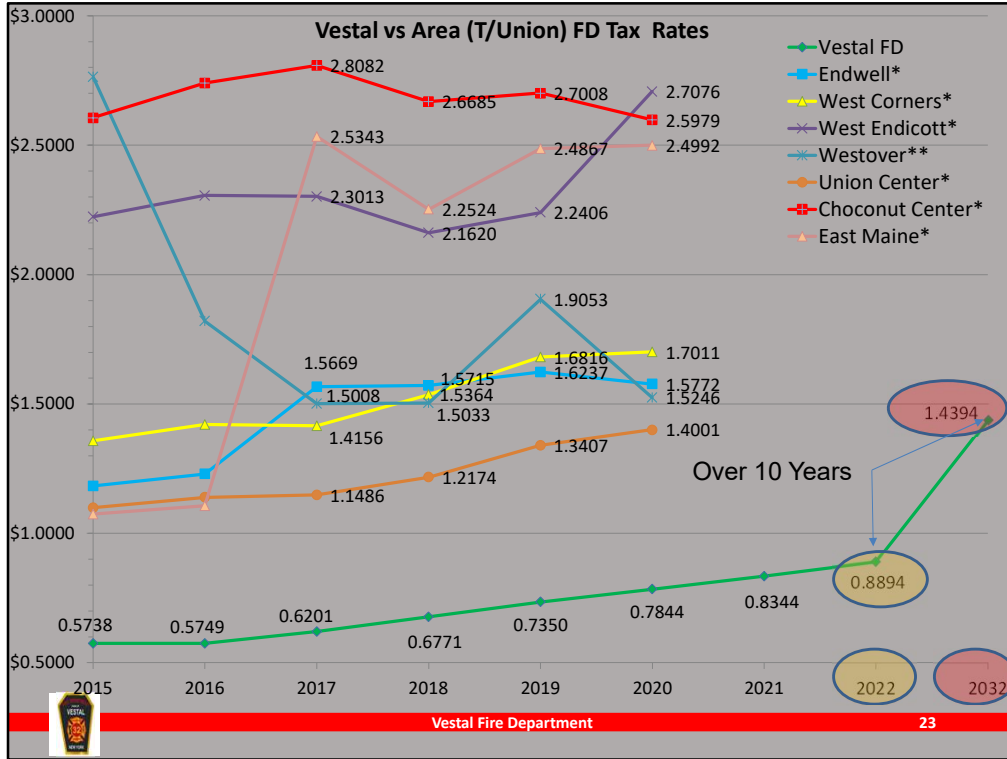
Town FD Tax Rate since 1962, note ups and downs when purchasing various apparatus



Building reserve balance allows purchases to occur without drastic swings in taxes. Reserves are built up at a steady rate, with steady tax rates and increases, and spent as required. No interest on purchases, saving significant money.



2020 Rates of all 45 Fire Districts in Broome County, 4 of which are contracted areas to neighboring districts and departments, and one is a Vestal special district (Tank Farms). 32 are over \$100 per \$100,000 of taxable value, Vestal is at \$78.44 (in 2020, currently \$83.44 in 2021)



Vestal FD tax rates compared to Town of Union Fire Districts, per \$1,000 taxable value. Even after 10 years of 0.50 increases, Vestal FD tax rates remain lower than all but one of those Districts tax rates today. And those increases will subsidize vehicle replacement through Capital Reserve Funds, without borrowing after 2028.

Bond Summary

- \$1,500,000 at 3.5% = approx. \$137,000/year for 15 years (\$2,066,000 including interest)
- Cost is included in the annual \$0.550 tax increase approved in 2017 by Fire Commissioners in the (5 year) Long Range Financial Plan
- Annual approved increase equates to \$5.50 on a \$100,000 home, with or without this project
- **NO ADDITIONAL INCREASE IN TAX RATE,** above that already in the Long Range Plan to replace these Engines





Increasing Reserves

- Why and how are we building reserves?





Why Fund Reserve\$?

- Sets vision for the future – how much, when and for what.
- Saves interest costs and provides opportunity for interest earnings (almost \$500,000 in interest would have been saved on this project! 2/3 cost of an additional engine).
- Our Capital Reserve Plans stand to save almost \$5,479,000 over bonding the same projects from now until 2039
- Provides greater flexibility to make timely acquisitions.
- Helps ensure a commitment to fund needs.
- Still allows voter participation.





How: Commitment to the Plan

- 5 year plan includes systematic funding.
- Requires supermajority to change the plan.
- Plan is reviewed and updated annually.



Establish a Building Capital Reserve Fund

- Establishes a fund to assist with building and grounds projects, where money can be saved to pay for various projects as they arise
- Examples
 - Replace Concrete Aprons in front of Sta. 2 & 3 \$78K
 - Update Keyless Entry – all 4 Stations \$19K
 - Emergency Generators Sta. 1, 2, 3 \$275K
- Same as Vehicle Capital Reserve Fund, money set aside out of normal tax rate, for future projects, to save interest costs. Already factored in to long range financial plan. Requires voter approval. **No additional Tax Increase!**



Referendum

Tuesday, July 13th, 2021

12-9 PM

Vestal Town Hall





Questions?

Please send them to us so we can answer them
for you and everyone else





Thank You

